



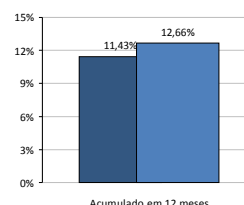
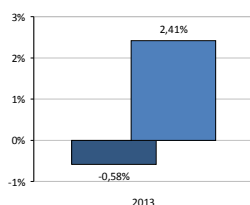
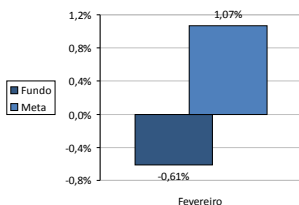
DEMONSTRATIVO DE RESULTADOS DO FUNDO PREVIDENCIÁRIO Fevereiro 2012

Rentabilidade

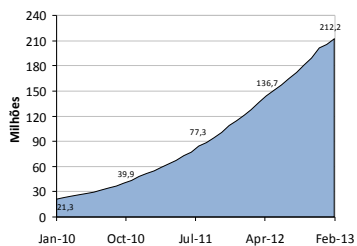
Fevereiro	
Fundo	Meta
-0,61%	1,07%

2013	
Fundo	Meta
-0,58%	2,41%

12 meses	
Fundo	Meta
11,43%	12,66%



Patrimônio



Período	Contribuição		Renda Imobiliária	Renda Mobiliária		Total
	Servidor	Patronal		Carteira	Dividendos	
jan/13	3.146.063,16	2.835.824,36	2.115,62	42.867,84		6.026.870,98
fev/13	3.219.240,32	3.264.174,40	109.532,05			6.592.946,77
Total 2013	6.365.303,48	6.099.998,76	111.647,67	42.867,84		12.619.817,75

